

SSGA Funds

State Street International Stock Selection Fund (formerly, SSGA International Stock Selection Fund)

Summary Prospectus – December 19, 2018

Class A SSILX

Class I SSIPX

Class K SSIQX

Before you invest, you may want to review the fund's prospectus, which contains more information about the fund and its risks. You may find the fund's prospectus and other information about the fund online at:

<http://ssgafunds.com/resources/materials/productLiteratureOverlay.seam>

You also may get this information at no cost by calling (800) 997-7327 or by sending an e-mail request to fund_inquiry@ssga.com. The fund's current prospectus and statement of additional information are incorporated by reference into this summary prospectus.

Investment Objective

State Street International Stock Selection Fund (the "Fund") seeks to provide long-term capital growth by investing primarily in securities of foreign issuers.

Fees and Expenses of the Fund

The tables below describe the fees and expenses that you may pay if you buy and hold shares of the Fund ("Fund Shares"). You may qualify for sales charge discounts on purchases of Class A shares if you agree to invest in the future, or if you and your family currently invest, at least \$50,000 in State Street Funds that offer Class A shares. More information about these and other discounts is available from your financial professional and in the "Investing in State Street Funds Shares" section on page 41 of the Fund's Prospectus.

Shareholder Fees (fees paid directly from your investment)

	<u>Class A</u>	<u>Class I</u>	<u>Class K</u>
Maximum Sales Charge (Load) Imposed On Purchases (as a percentage of offering price)	5.25%	None	None
Maximum Deferred Sales Charge (Load) (as a percentage of the net asset value) ¹	None	None	None

Annual Fund Operating Expenses (expenses that you pay each year as a percentage of the value of your investment)

	<u>Class A</u>	<u>Class I</u>	<u>Class K</u>
Management Fees	0.75%	0.75%	0.75%
Distribution and Shareholder Service (12b-1) Fees	0.25%	0.00%	0.00%
Other Expenses ²	0.44%	0.44%	0.24%
Total Annual Fund Operating Expenses	1.44%	1.19%	0.99%
Less Fee Waivers and/or Expense Reimbursements ³	(0.24%)	(0.24%)	(0.24%)
Total Annual Fund Operating Expenses After Fee Waivers and/or Expense Reimbursements	<u>1.20%</u>	<u>0.95%</u>	<u>0.75%</u>

¹ A contingent deferred sales charge ("CDSC") of 1.00% may be assessed on redemptions of Class A shares made within 18 months after purchase where no initial sales charge was paid at the time of purchase as part of an investment of \$1,000,000 or more.

² "Other expenses" have been restated to reflect current fees.

³ The Fund's investment adviser, SSGA Funds Management, Inc. (the "Adviser" or "SSGA FM"), is contractually obligated until December 31, 2019 (i) to waive up to the full amount of the advisory fee payable by the Fund, and/or (ii) to reimburse the Fund to the extent that Total Annual Fund Operating Expenses (exclusive of non-recurring account fees, extraordinary expenses, acquired fund fees and expenses, and distribution, shareholder servicing and sub-transfer agency fees) exceed 0.75% of average daily net assets on an annual basis. This waiver and/or reimbursement may not be terminated prior to December 31, 2019 except with the approval of the Fund's Board of Trustees. SSGA FM has contractually agreed to waive 0.01% of its administration fee. This waiver may not be terminated or modified except with the approval of the Fund's Board of Trustees.

Example

This Example is intended to help you compare the cost of investing in the Fund with the cost of investing in other mutual funds. The Example assumes that you invest \$10,000 in the Fund for the time periods indicated, and then sell all of your Fund Shares at the end of those periods. The Example also assumes that your investment has a 5% return each year and that the Fund's operating expenses remain the same. The calculation of costs for the one-year period takes into account the effect of any current contractual fee waivers

State Street International Stock Selection Fund (formerly, SSGA International Stock Selection Fund)

Summary Prospectus – December 19, 2018

Class A SSILX

Class I SSIPX

Class K SSIQX

and/or reimbursements; and the calculation of costs for the remaining periods takes such fee waivers and/or reimbursements into account only for the first year of each such period. Although your actual costs may be higher or lower, based on these assumptions your costs would be:

	<u>1 year</u>	<u>3 years</u>	<u>5 years</u>	<u>10 years</u>
Class A	\$641	\$934	\$1,249	\$2,139
Class I	\$ 97	\$354	\$ 631	\$1,422
Class K	\$ 77	\$291	\$ 524	\$1,191

Portfolio Turnover

The Fund pays transaction costs, such as commissions, when it buys and sells securities (or “turns over” its portfolio). A higher portfolio turnover rate may indicate higher transaction costs and may result in higher taxes when Fund Shares are held in a taxable account. These costs, which are not reflected in Annual Fund Operating Expenses or in the Example, affect the Fund’s performance. During the most recent fiscal year, the Fund’s portfolio turnover rate was 72% of the average value of its portfolio.

Principal Investment Strategies

The Fund will invest at least 80% of its net assets (plus borrowings, if any) in equity securities of foreign issuers, such as common stocks issued by companies in the countries and industries represented in the MSCI® EAFE® Index, the Fund’s benchmark. The Fund may invest in small capitalization companies. The Fund will provide shareholders with at least sixty (60) days’ notice prior to any change in its 80% investment policy.

The Adviser employs a proprietary quantitative multi-factor stock-selection model to select securities while controlling risk exposure of the Fund relative to the Fund’s benchmark. This model evaluates the relative attractiveness of securities from a specified investment universe based on the correlation of certain historical economic and financial factors applicable to issuers and/or countries and/or sectors (such as measures of growth potential, valuation, quality, and investor sentiment) and based on other historical quantitative metrics to past performance. Additionally, the model may incorporate an element to evaluate the macroeconomic environment for a portion of the model determined by prevailing market conditions. This element allows a disciplined approach to seek to be adaptive to the macroeconomic environment and respond to changing conditions. The quantitative model allows the Adviser to evaluate each eligible security and then rank eligible securities in the Fund’s investment universe in the order of their attractiveness as Fund investments.

The model generates a portfolio that is drawn primarily from securities included in the Fund’s benchmark index. The remaining securities are drawn from the Fund’s investment universe and are determined by the model in order to overweight or underweight certain countries, securities, industries and/or sectors represented in the benchmark. The Fund’s investment universe is the securities in the MSCI EAFE Investable Market Index, which is designed to capture large, mid and small capitalization representation across the following developed market countries: Australia, Austria, Belgium, Denmark, Finland, France, Germany, Hong Kong, Ireland, Israel, Italy, Japan, the Netherlands, New Zealand, Norway, Portugal, Singapore, Spain, Sweden, Switzerland and the United Kingdom.

The Adviser may make updates and adjustments to the economic and financial conditions and other quantitative metrics considered, and to the weightings among them. From time to time, the Adviser may make a qualitative judgment not to implement fully the results of the quantitative investment process if it believes that the process did not take into account all of the information relevant to the Fund’s portfolio, or that a different evaluation or weighting of the information relating to the Fund’s portfolio might be more appropriate.

The Fund expects to invest primarily in common stocks. The Fund may invest in other investment companies, including exchange-traded funds, to the extent permitted by applicable law (including those advised by the Adviser). The Fund may hold a portion of its assets in cash and cash instruments. The Fund also may lend its securities and engage in active trading.

State Street International Stock Selection Fund (formerly, SSGA International Stock Selection Fund)

Summary Prospectus – December 19, 2018

Class A SSILX

Class I SSIPX

Class K SSIQX

The Fund may invest in derivatives, such as futures contracts and total return swaps, in order to gain broad equity market exposures pending investments of cash, or to reduce market exposures pending the sales of securities. The Fund may enter into foreign currency futures, forward contracts, and options to hedge currency risk, although the Adviser does not currently anticipate that such transactions will play any significant role in the investment process.

Principal Risks

You could lose money by investing in the Fund. **An investment in the Fund is subject to investment risks, including possible loss of principal, is not a deposit in a bank and is not insured or guaranteed by the Federal Deposit Insurance Corporation or any other government agency.** The Fund may not achieve its investment objective. General risks associated with the Fund's investment policies and investment strategies are discussed below. The Fund is not intended to be a complete investment program, but rather is intended for investment as part of a diversified investment portfolio. Investors should consult their own advisers as to the role of the Fund in their overall investment programs.

In addition, the Fund is subject to the following risks:

Counterparty Risk: The Fund will be subject to credit risk with respect to the counterparties with which the Fund enters into derivatives contracts, repurchase agreements, reverse repurchase agreements, and other transactions. If a counterparty fails to meet its contractual obligations, the Fund may be unable to terminate or realize any gain on the investment or transaction, or to recover collateral posted to the counterparty, resulting in a loss to the Fund. If the Fund holds collateral posted by its counterparty, it may be delayed or prevented from realizing on the collateral in the event of a bankruptcy or insolvency proceeding relating to the counterparty.

Currency Risk: The value of the Fund's assets may be affected favorably or unfavorably by currency exchange rates, currency exchange control regulations, and delays, restrictions or prohibitions on the repatriation of foreign currencies. Foreign currency exchange rates may have significant volatility, and changes in the values of foreign currencies against the U.S. dollar may result in substantial declines in the values of the Fund's assets denominated in foreign currencies.

Derivatives Risk: Derivative transactions can create investment leverage and may have significant volatility. It is possible that a derivative transaction will result in a much greater loss than the principal amount invested, and the Fund may not be able to close out a derivative transaction at a favorable time or price. The counterparty to a derivatives contract may be unable or unwilling to make timely settlement payments, return the Fund's margin, or otherwise honor its obligations. A derivatives transaction may not behave in the manner anticipated by the Adviser or may not have the effect on the Fund anticipated by the Adviser.

Equity Investing Risk: The market prices of equity securities owned by the Fund may go up or down, sometimes rapidly or unpredictably. The value of a security may decline for a number of reasons that may directly relate to the issuer and also may decline due to general industry or market conditions that are not specifically related to a particular company. In addition, equity markets tend to move in cycles, which may cause stock prices to fall over short or extended periods of time.

Futures Contract Risks; Other Exchange-Traded Derivatives: The risk of loss relating to the use of futures contracts and other exchange-traded derivatives is potentially unlimited. There is no assurance that a liquid secondary market on an exchange will exist for any particular futures contract or other exchange-traded derivative or at any particular time. In the event no such market exists for a particular derivative, it might not be possible to effect closing transactions, and the Fund will be unable to terminate its exposure to the derivative. If the Fund uses futures contracts or other exchange-traded derivatives for hedging purposes, there is a risk of imperfect correlation between movements in the prices of the derivatives and movements in the securities or index underlying the derivatives or movements in the prices of the Fund's investments that are the subject of such hedge. Certain foreign futures contracts and other exchange-traded derivatives may be less liquid and more volatile than U.S. contracts. The Fund may be delayed or prevented from recovering margin or other amounts deposited with a futures commission merchant or futures clearinghouse.

Geographic Focus Risk: The performance of a fund that is less diversified across countries or geographic regions will be closely tied to market, currency, economic, political, environmental, or regulatory conditions and developments in the countries or regions in which the fund invests, and may be more volatile than the performance of a more geographically-diversified fund.

State Street International Stock Selection Fund (formerly, SSGA International Stock Selection Fund)

Summary Prospectus – December 19, 2018

Class A SSILX

Class I SSIPX

Class K SSIQX

Large-Capitalization Securities Risk: Returns on investments in securities of large companies could trail the returns on investments in securities of smaller and mid-sized companies. Larger companies may be unable to respond as quickly as smaller and mid-sized companies to competitive challenges or to changes in business, product, financial, or other market conditions. Larger companies may not be able to maintain growth at the high rates that may be achieved by well-managed smaller and mid-sized companies.

Liquidity Risk: Lack of a ready market or restrictions on resale may limit the ability of the Fund to sell a security at an advantageous time or price or at all. Illiquid securities may trade at a discount from comparable, more liquid investments and may be subject to wide fluctuations in market value. Illiquidity of the Fund's holdings may limit the ability of the Fund to obtain cash to meet redemptions on a timely basis. In addition, the Fund, due to limitations on investments in any illiquid securities and/or the difficulty in purchasing and selling such investments, may be unable to achieve its desired level of exposure to a certain market or sector.

Management Risk: The Fund is actively managed. The Adviser's judgments about the attractiveness, relative value, or potential appreciation of a particular sector, security, commodity or investment strategy or as to a hedging strategy may prove to be incorrect, and may cause the Fund to incur losses. There can be no assurance that the Adviser's investment techniques and decisions will produce the desired results.

Market Risk: The Fund's investments are subject to changes in general economic conditions, and general market fluctuations and the risks inherent in investment in securities markets. Investment markets can be volatile and prices of investments can change substantially due to various factors including, but not limited to, economic growth or recession, changes in interest rates, changes in the actual or perceived creditworthiness of issuers, and general market liquidity. The Fund is subject to the risk that geopolitical events will disrupt securities markets and adversely affect global economies and markets.

Modeling Risk: The Adviser uses quantitative models in an effort to enhance returns and manage risk. Any imperfections, errors or limitations in these models could limit any benefit to the Fund from the use of the models, or could result in incorrect outputs or in investment outcomes different from or opposite to those expected or desired by the Adviser. There can be no assurance that the models will behave as expected in all market conditions. In addition, computer programming used to create quantitative models, or the data on which such models operate, might contain one or more errors.

Non-U.S. Securities Risk: Non-U.S. securities (including depositary receipts) are subject to political, regulatory, and economic risks not present in domestic investments. There may be less information publicly available about a non-U.S. entity than about a U.S. entity, and many non-U.S. entities are not subject to accounting, auditing, legal and financial report standards comparable to those in the United States. Further, such entities and/or their securities may be subject to risks associated with currency controls; expropriation; changes in tax policy; greater market volatility; differing securities market structures; higher transaction costs; and various administrative difficulties, such as delays in clearing and settling portfolio transactions or in receiving payment of dividends. Securities traded on foreign markets may be less liquid (harder to sell) than securities traded domestically. Foreign governments may impose restrictions on the repatriation of capital to the U.S. In addition, to the extent that the Fund buys securities denominated in a foreign currency, there are special risks such as changes in currency exchange rates and the risk that a foreign government could regulate foreign exchange transactions. In addition, to the extent investments are made in a limited number of countries, events in those countries will have a more significant impact on the Fund. Investments in depositary receipts may be less liquid and more volatile than the underlying shares in their primary trading market.

Risk of Investment in Other Pools: If the Fund invests in another pooled investment vehicle, it is exposed to the risk that the other pool will not perform as expected and is exposed indirectly to all of the risks applicable to an investment in such other pool. The investment policies of the other pool may not be the same as those of the Fund; as a result, an investment in the other pool may be subject to additional or different risks than those to which the Fund is typically subject. The Fund bears its proportionate share of the fees and expenses of any pool in which it invests. The Adviser or an affiliate may serve as investment adviser to a pool in which the Fund may invest, leading to potential conflicts of interest. It is possible that other clients of the Adviser or its affiliates will purchase or sell interests in a pool sponsored or managed by the Adviser or its affiliates at prices and at times more favorable than those at which the Fund does so.

State Street International Stock Selection Fund (formerly, SSGA International Stock Selection Fund)

Summary Prospectus – December 19, 2018

Class A SSILX

Class I SSIPX

Class K SSIQX

Small- and Mid-Capitalization Securities Risk: The securities of small- and mid-capitalization companies may be more volatile and may involve more risk than the securities of larger companies. These companies may have limited product lines, markets or financial resources, may lack the competitive strength of larger companies, and may depend on a few key employees. In addition, these companies may have been recently organized and may have little or no track record of success. The securities of smaller companies may trade less frequently and in smaller volumes than more widely held securities. Some securities of smaller issuers may be illiquid or may be restricted as to resale, and their values may have significant volatility. The Fund may be unable to liquidate its positions in such securities at any time, or at a favorable price, in order to meet the Fund's obligations. Returns on investments in securities of small- and mid-capitalization companies could trail the returns on investments in securities of larger companies.

Unconstrained Sector Risk: The Fund may invest a substantial portion of its assets within one or more economic sectors or industries, which may change from time to time. Greater investment focus on one or more sectors or industries increases the potential for volatility and the risk that events negatively affecting such sectors or industries could reduce returns, potentially causing the value of the Fund's Shares to decrease, perhaps significantly.

Valuation Risk: Some portfolio holdings, potentially a large portion of the Fund's investment portfolio, may be valued on the basis of factors other than market quotations. This may occur more often in times of market turmoil or reduced liquidity. There are multiple methods that can be used to value a portfolio holding when market quotations are not readily available. The value established for any portfolio holding at a point in time might differ from what would be produced using a different methodology or if it had been priced using market quotations. Portfolio holdings that are valued using techniques other than market quotations, including "fair valued" securities, may be subject to greater fluctuation in their valuations from one day to the next than if market quotations were used. In addition, there is no assurance that the Fund could sell or close out a portfolio position for the value established for it at any time, and it is possible that the Fund would incur a loss because a portfolio position is sold or closed out at a discount to the valuation established by the Fund at that time. Investors who purchase or redeem Fund Shares on days when the Fund is holding fair-valued investments may receive fewer or more shares or lower or higher redemption proceeds than they would have received if the Fund had not fair-valued the holding(s) or had used a different valuation methodology.

State Street International Stock Selection Fund (formerly, SSGA International Stock Selection Fund)

Summary Prospectus – December 19, 2018

Class A SSILX

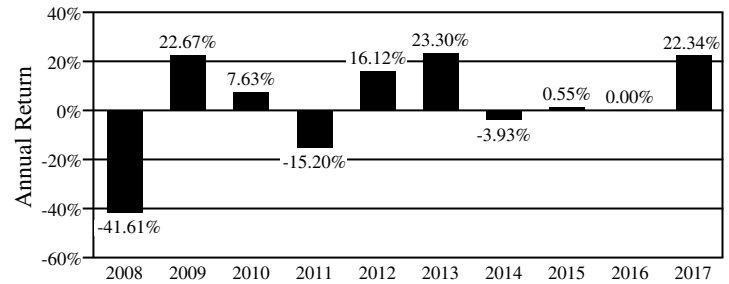
Class I SSIPX

Class K SSIQX

Performance

The bar chart and table below provide some indication of the risks of investing in the Fund by illustrating the variability of the Fund's returns from year-to-year and by showing how the Fund's average annual returns for the periods ended December 31, 2017 compared with those of a broad measure of market performance. The bar chart shows how the Class A shares' returns have varied for each full calendar year shown. The effect of sales charges, applicable to Class A shares only, is not reflected in the bar chart; if these amounts were reflected, returns would be lower. For periods prior to July 7, 2014, the inception date for Class A, I and K shares, the performance information shown is that of the Class N shares of the Fund (which are offered in a separate prospectus), adjusted to reflect the higher class-related operating fees and expenses of Class A shares. Except for differences in returns resulting from differences in fees and expenses, all share classes would have substantially similar returns because all share classes invest in the same portfolio of securities. Returns would differ only to the extent that the Class A, Class I and Class K share classes do not have the same expenses as Class N shares. Class A shares are generally expected to incur higher expenses, and Class I and K shares are generally expected to incur lower expenses, than Class N shares. The Fund's past performance does not necessarily indicate how the Fund will perform in the future. Current performance information for the Fund is available toll free by calling (800)-997-7327 or by visiting our website at www.ssgafunds.com.

Annual Total Returns (years ended 12/31)*



Highest Quarterly Return: 20.42% (Q2, 2009)

Lowest Quarterly Return: -22.89% (Q3, 2011)

* As of 09/30/2018, the Fund's Calendar Year-To-Date return was -5.62%.

Average Annual Total Returns (for periods ended 12/31/17)

	One Year	Five Years	Ten Years	Inception Date
Class A				7/7/2014
Return Before Taxes	15.94%	6.67%	0.47%	
Return After Taxes on Distributions	15.06%	6.03%	0.00%	
Return After Taxes on Distributions and Sale of Fund Shares	9.91%	5.21%	0.43%	
Class I	22.56%	8.07%	1.23%	7/7/2014
Class K	22.60%	8.16%	1.28%	7/7/2014
MSCI EAFE Net Dividend Index (reflects no deduction for fees, expenses or taxes other than withholding taxes on reinvested dividends)	25.03%	7.90%	1.94%	

The returns for certain periods would have been lower without the effect of a contractual fee waiver and/or reimbursement.

Fund returns after taxes on distributions and sale of Fund Shares may be higher than returns before taxes and/or returns after taxes on distributions for certain periods because they reflect the tax benefit an investor may receive as a result of the capital losses that would have been incurred on the sale of Fund Shares or due to the effect of foreign tax credits.

After-tax returns are calculated using the historical highest individual federal marginal income tax rates and do not reflect the impact of state and local taxes. After-tax returns depend on an investor's tax situation and may differ from those shown below, and after-tax returns are not relevant to investors who hold their shares through tax-advantaged arrangements, such as 401(k) plans or individual retirement accounts (IRAs). After-tax returns are shown for Class A only and after-tax returns for other share classes will vary. For

State Street International Stock Selection Fund (formerly, SSGA International Stock Selection Fund)

Summary Prospectus – December 19, 2018

Class A SSILX

Class I SSIPX

Class K SSIQX

periods prior to July 7, 2014, the inception date for Class A shares, the performance information shown is that of the Class N shares of the Fund, adjusted to reflect the higher class-related operating fees and expenses of Class A shares. For periods prior to July 7, 2014, the inception date for Class I and K shares, the performance information shown is that of the Class N shares of the Fund. Except for differences in returns resulting from differences in fees, expenses, and sales charges (as applicable), all share classes would have substantially similar returns because all share classes invest in the same portfolio of securities.

Investment Adviser

SSGA FM serves as the investment adviser to the Fund.

Adel Daghmouri and Stuart Hall serve as portfolio managers of the Fund. They have served on the Fund since 2013 and 2010, respectively.

Purchase and Sale of Fund Shares

The Fund's initial and subsequent investment minimums generally are as follows, although the Fund may reduce or waive the minimums in some cases.

Class A	
To establish an account	\$2,000
To add to an existing account	None
Class I	
To establish an account	\$1,000,000
To add to an existing account	None
Class K	
To establish an account	\$10,000,000
To add to an existing account	None

You may purchase or redeem Fund Shares on any day the Fund is open for business.

Written Requests and Wire Transfers. You may purchase or redeem Fund Shares by written request or wire transfer.

Written requests should be sent to:

By Mail:

SSGA Funds
P.O. Box 219737
Kansas City, MO 64121-9737

By Overnight/Registered, Express, Certified Mail:

SSGA Funds
430 W 7th Street Suite 219737
Kansas City, MO 64105-1407

For wire transfer instructions, please call (800) 647-7327 between 8 a.m. and 4 p.m. Eastern time. Redemptions by telephone are permitted only if you previously have been authorized for these transactions.

By Intermediary:

If you wish to purchase or redeem Fund Shares through a broker, bank or other financial intermediary ("Financial Intermediary"), please contact that Financial Intermediary directly. Your Financial Intermediary may have different or additional requirements for opening an account and/or for the processing of purchase and redemption orders, or may be closed at times when the Fund is open. Financial Intermediaries may contact DST Asset Manager Solutions, Inc. at (877) 332-6207 or via email at nscresearch@dstsystems.com with questions.

State Street International Stock Selection Fund (formerly, SSGA International Stock Selection Fund)

Summary Prospectus – December 19, 2018

Class A SSILX

Class I SSIPX

Class K SSIQX

Tax Information

For mutual funds generally, dividends from net investment income (other than qualified dividend income) and distributions of net short-term capital gains are taxable to you as ordinary income under U.S. federal income tax laws whether paid in cash or in additional shares. Distributions from net long-term gains are taxable as long-term taxable gains regardless of the length of time you have held the shares and whether you were paid in cash or additional shares. Dividend and capital gains distributions that you receive, as well as your gains or losses from any sale or exchange of Fund Shares, may be subject to state and local income taxes. If you hold the shares through a tax-advantaged arrangement, you generally will be taxed only upon withdrawal of monies from the arrangement.

Payments to Broker-Dealers and Other Financial Intermediaries

If you purchase Fund Shares through a broker-dealer or other Financial Intermediary (such as a bank), the Fund, the Adviser or its affiliates may pay the Financial Intermediary for certain activities related to the Fund, including educational training programs, conferences, the development of technology platforms and reporting systems, or other services related to the sale or promotion of the Fund. These payments may create a conflict of interest by influencing the broker-dealer or other intermediary and your salesperson to recommend the Fund over another investment. Ask your salesperson or visit your Financial Intermediary's website for more information.